

HOUSING
EQUITY AND
COMMUNITY
SERIES

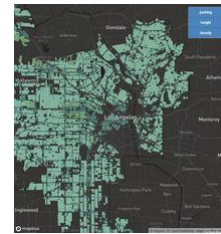
Part Two:

COUPLING MORE HOUSING WITH TRANSIT: *State, Local, and Community Perspectives*

Wednesday, February 20th

5:00 PM - 7:00 PM
2355 Public Affairs Building

*A UCLA joint endeavor from the Lewis Center for Regional Policy Studies
and the Ziman Center for Real Estate.*



Please join us on Feb. 20th for the **Housing, Equity and Community Series** presentation on the UCLA Lewis Center report, "[Transit Oriented Los Angeles: Envisioning an Equitable and Thriving Future](#)," made possible by LA Metro and ULI-Los Angeles. The presentation will be followed by a panel discussion on the [California Senate Bill 50 \("SB827 v.2.0"\)](#), the Los Angeles' [Transit Oriented Communities \(TOC\) Affordable Housing Incentive Program](#) and the issues around density and transit-oriented development in Los Angeles and California.

Sponsored by the [UCLA Lewis Center for Regional Policy Studies](#) and the [UCLA Ziman Center's UCLA Rosalinde and Arthur Gilbert Program in Real Estate, Finance and Urban Economics](#).

Speakers



Elizabeth A. Camacho
Partner
Loeb & Loeb LLP



Michael Lens
Associate Professor
Urban Planning and
Public Policy
UCLA Lewis Center and
UCLA Luskin School



Michael Manville
Associate Professor
Urban Planning
UCLA Luskin School



Laura Raymond
Director for the Alliance
for Community
Development (ACT-LA)



Arthi Varma
Deputy Director
Citywide Planning,
LA Department of City
Planning

UCLA Lewis Center
for Regional Policy Studies

UCLA ZIMAN
CENTER for REAL ESTATE

IMPACT
@ANDERSON

110 Westwood Plaza B100
Los Angeles, CA 90095-1481
(310) 794-2022
zimancenter.ucla.edu

THINK IN THE NEXT

